



fly



drive



take



ride



ESL/EFL Resources for Teachers
English.com
www.mes-english.com



fly



drive



take



ride



ESL/EFL Resources for Teachers
English.com
www.mes-english.com



fly



drive



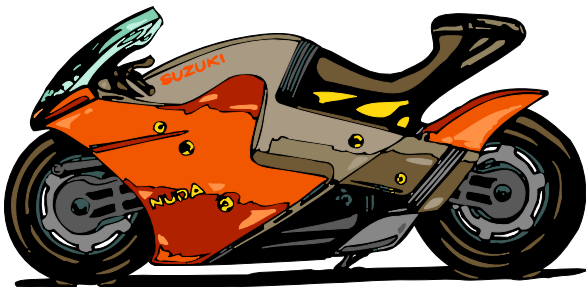
take



ride



ESL/EFL Resources for Teachers
English.com
www.mes-english.com



fly



drive



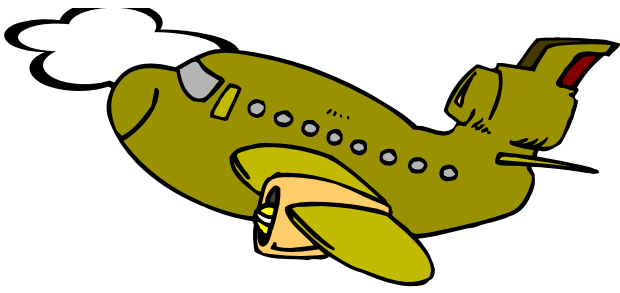
take



ride



ESL/EFL Resources for Teachers
English.com
www.mes-english.com



fly



drive



take



ride



ESL/EFL Resources for Teachers
English.com
www.mes-english.com



fly



drive



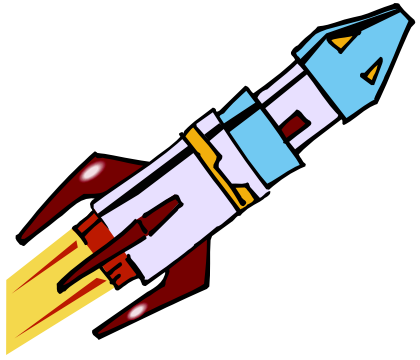
take



ride



ESL/EFL Resources for Teachers
English.com
www.mes-english.com



fly



drive



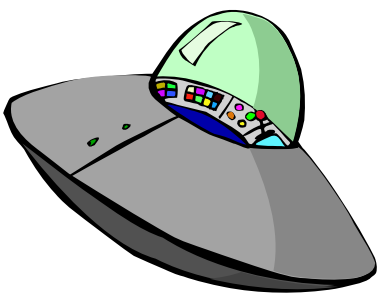
take



ride



ESL/EFL Resources for Teachers
English.com
www.mes-english.com



fly



drive



take



ride



ESL/EFL Resources for Teachers
English.com
www.mes-english.com



fly



drive



take



ride



ESL/EFL Resources for Teachers
English.com
www.mes-english.com



fly



drive



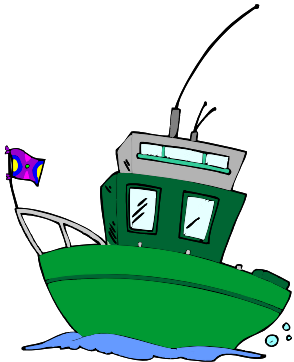
take



ride



ESL/EFL Resources for Teachers
English.com
www.mes-english.com



fly



drive



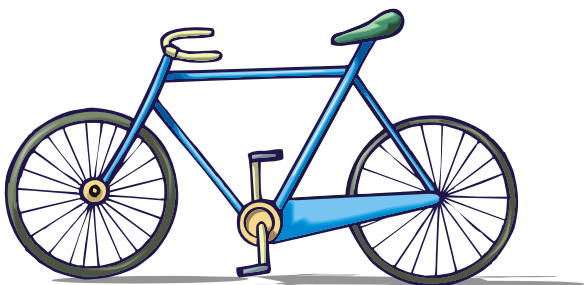
take



ride



ESL/EFL Resources for Teachers
English.com
www.mes-english.com



fly



drive



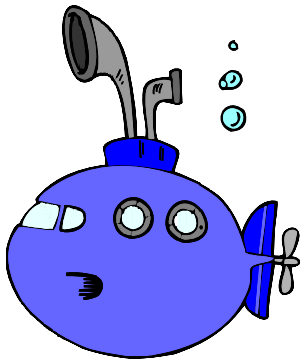
take



ride



ESL/EFL Resources for Teachers
English.com
www.mes-english.com



fly

take

ride

drive

ESL/EFL Resources for Teachers
English.com
www.mes-english.com

A set of four cards on a pink background. The top-left card shows a green airplane flying through a white cloud, with the word 'fly' written above it. The top-right card shows a blue sports car, with the word 'drive' written above it. The bottom-left card shows a yellow taxi, with the word 'take' written above it. The bottom-right card shows an orange motorcycle, with the word 'ride' written above it. At the bottom right is the logo for English.com, which includes the text 'ESL/EFL Resources for Teachers' and the website 'www.mes-english.com'.

fly

take

ride

drive

ESL/EFL Resources for Teachers
English.com
www.mes-english.com

A set of four cards on a pink background. The top-left card shows a green airplane flying through a white cloud, with the word 'fly' written above it. The top-right card shows a blue sports car, with the word 'drive' written above it. The bottom-left card shows a yellow taxi, with the word 'take' written above it. The bottom-right card shows an orange motorcycle, with the word 'ride' written above it. At the bottom right is the logo for English.com, which includes the text 'ESL/EFL Resources for Teachers' and the website 'www.mes-english.com'.

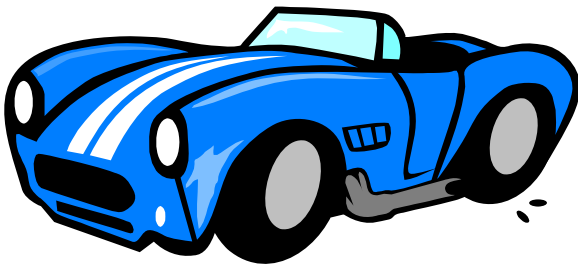
fly

take

ride

drive

ESL/EFL Resources for Teachers
English.com
www.mes-english.com

A set of four cards on a pink background. The top-left card shows a green airplane flying through a white cloud, with the word 'fly' written above it. The top-right card shows a blue sports car, with the word 'drive' written above it. The bottom-left card shows a yellow taxi, with the word 'take' written above it. The bottom-right card shows an orange motorcycle, with the word 'ride' written above it. At the bottom right is the logo for English.com, which includes the text 'ESL/EFL Resources for Teachers' and the website 'www.mes-english.com'.

fly

take

ride

drive

ESL/EFL Resources for Teachers
English.com
www.mes-english.com

A set of four cards on a pink background. The top-left card shows a green airplane flying through a white cloud, with the word 'fly' written above it. The top-right card shows a blue sports car, with the word 'drive' written above it. The bottom-left card shows a yellow taxi, with the word 'take' written above it. The bottom-right card shows an orange motorcycle, with the word 'ride' written above it. At the bottom right is the logo for English.com, which includes the text 'ESL/EFL Resources for Teachers' and the website 'www.mes-english.com'.

