



BA

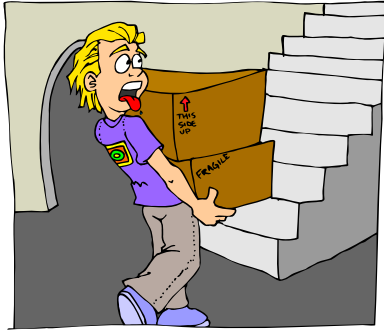
Where does she work?

Where does he work?

ESL/EFL Resources for Teachers

English.com

www.mes-english.com



BA

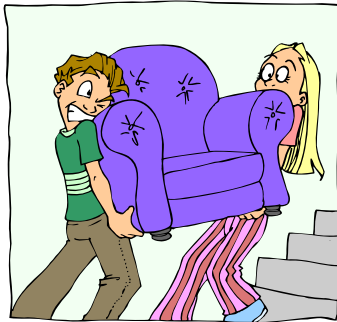
Where does she work?

Where does he work?

ESL/EFL Resources for Teachers

English.com

www.mes-english.com



BA

Where does she work?

Where does he work?

ESL/EFL Resources for Teachers

English.com

www.mes-english.com



BA

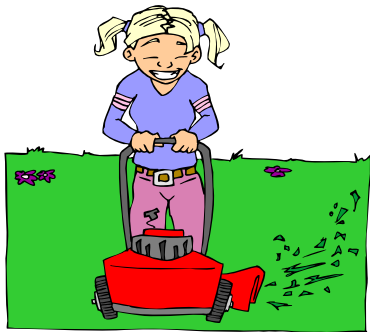
Where does she work?

Where does he work?

ESL/EFL Resources for Teachers

English.com

www.mes-english.com





BA

Where does she work?

Where does he work?

ESL/EFL Resources for Teachers

English.com

www.mes-english.com



BA

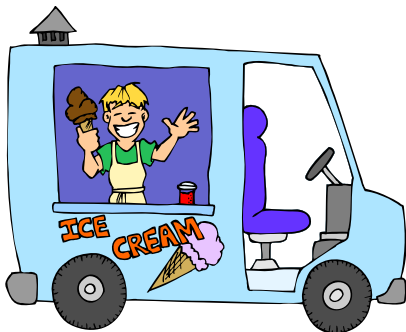
Where does she work?

Where does he work?

ESL/EFL Resources for Teachers

English.com

www.mes-english.com



BA

Where does she work?

Where does he work?

ESL/EFL Resources for Teachers

English.com

www.mes-english.com



BA

Where does she work?

Where does he work?

ESL/EFL Resources for Teachers

English.com

www.mes-english.com



BA

Where does she work?

Where does he work?

ESL/EFL Resources for Teachers

English.com

www.mes-english.com

A black and white illustration. On the left, a woman with a ponytail holds a shopping bag. On the right, a man in a white shirt and dark pants runs towards a building labeled 'BANK'.

BA

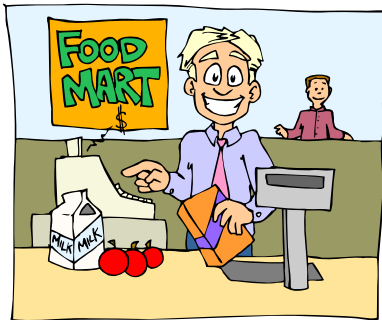
Where does she work?

Where does he work?

ESL/EFL Resources for Teachers

English.com

www.mes-english.com

A black and white illustration. On the left, a woman with a ponytail holds a shopping bag. On the right, a man in a white shirt and dark pants runs towards a building labeled 'BANK'.

BA

Where does she work?

Where does he work?

ESL/EFL Resources for Teachers

English.com

www.mes-english.com

A black and white illustration. On the left, a woman with a ponytail holds a shopping bag. On the right, a man in a white shirt and dark pants runs towards a building labeled 'BANK'.

BA

Where does she work?

Where does he work?

ESL/EFL Resources for Teachers

English.com

www.mes-english.com

A black and white illustration. On the left, a woman with a ponytail holds a shopping bag. On the right, a man in a white shirt and dark pants runs towards a building labeled 'BANK'.



BA

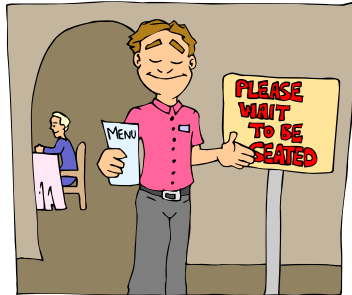
Where does she work?

Where does he work?

ESL/EFL Resources for Teachers

English.com

www.mes-english.com

A cartoon illustration of a woman with blonde hair, wearing a white shirt and a black bag, standing in a bank line. To her right, a man in a white t-shirt and blue pants is running happily towards a building labeled 'BANK'.

BA

Where does she work?

Where does he work?

ESL/EFL Resources for Teachers

English.com

www.mes-english.com

A cartoon illustration of a woman with blonde hair, wearing a white shirt and a black bag, standing in a bank line. To her right, a man in a white t-shirt and blue pants is running happily towards a building labeled 'BANK'.

wild

BA

Where does she work?

Where does he work?

ESL/EFL Resources for Teachers

English.com

www.mes-english.com

A cartoon illustration of a woman with blonde hair, wearing a white shirt and a black bag, standing in a bank line. To her right, a man in a white t-shirt and blue pants is running happily towards a building labeled 'BANK'.