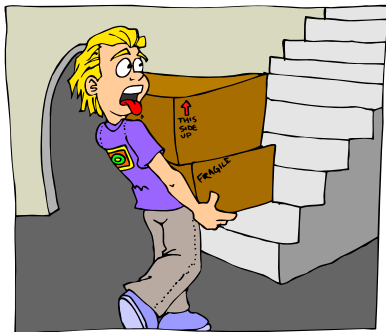




Where does she work?

Where does he work?

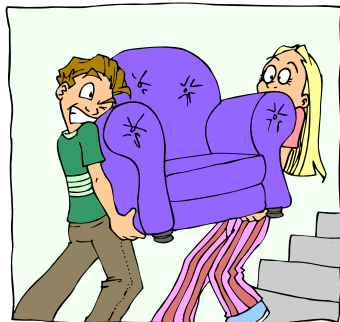
ESL/EFL Resources for Teachers
English.com
www.mes-english.com



Where does she work?

Where does he work?

ESL/EFL Resources for Teachers
English.com
www.mes-english.com



Where does she work?

Where does he work?

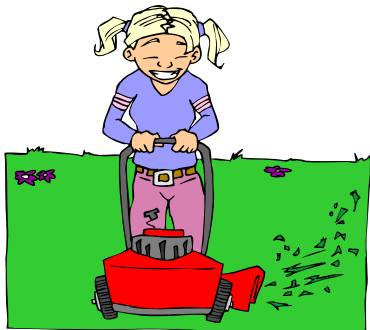
ESL/EFL Resources for Teachers
English.com
www.mes-english.com



Where does she work?

Where does he work?

ESL/EFL Resources for Teachers
English.com
www.mes-english.com





BA

Where does she work?

Where does he work?

ESL/EFL Resources for Teachers

English.com

www.mes-english.com

A circular graphic on a purple background. On the left, a girl with blonde pigtails and a red bag is walking. On the right, a boy in a yellow shirt and blue pants is running towards a building labeled 'BANK'. The text 'BA' is at the top, and the questions 'Where does she work?' and 'Where does he work?' are in the center. At the bottom, it says 'ESL/EFL Resources for Teachers', 'English.com', and 'www.mes-english.com'.

BA

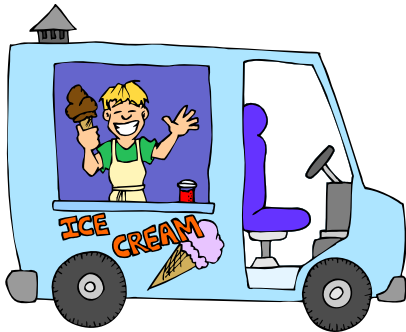
Where does she work?

Where does he work?

ESL/EFL Resources for Teachers

English.com

www.mes-english.com

A circular graphic on a purple background. On the left, a girl with blonde pigtails and a red bag is walking. On the right, a boy in a yellow shirt and blue pants is running towards a building labeled 'BANK'. The text 'BA' is at the top, and the questions 'Where does she work?' and 'Where does he work?' are in the center. At the bottom, it says 'ESL/EFL Resources for Teachers', 'English.com', and 'www.mes-english.com'.

BA

Where does she work?

Where does he work?

ESL/EFL Resources for Teachers

English.com

www.mes-english.com

A circular graphic on a purple background. On the left, a girl with blonde pigtails and a red bag is walking. On the right, a boy in a yellow shirt and blue pants is running towards a building labeled 'BANK'. The text 'BA' is at the top, and the questions 'Where does she work?' and 'Where does he work?' are in the center. At the bottom, it says 'ESL/EFL Resources for Teachers', 'English.com', and 'www.mes-english.com'.

BA

Where does she work?

Where does he work?

ESL/EFL Resources for Teachers

English.com

www.mes-english.com

A circular graphic on a purple background. On the left, a girl with blonde pigtails and a red bag is walking. On the right, a boy in a yellow shirt and blue pants is running towards a building labeled 'BANK'. The text 'BA' is at the top, and the questions 'Where does she work?' and 'Where does he work?' are in the center. At the bottom, it says 'ESL/EFL Resources for Teachers', 'English.com', and 'www.mes-english.com'.



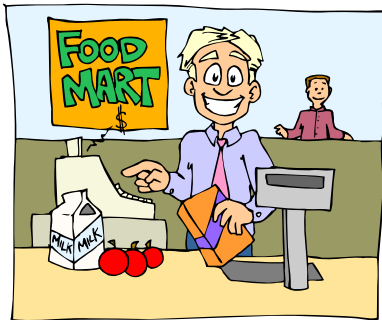
BA
Where does she work?
ESL/EFL Resources for Teachers
English.com
www.mes-english.com

Where does he work?
BANK
ESL/EFL Resources for Teachers
English.com
www.mes-english.com

A purple background card with two circular illustrations. The left illustration shows a woman with blonde hair in a ponytail, wearing a yellow shirt and blue pants, holding a red bag and standing in front of a building with 'BA' on it. The right illustration shows a man with brown hair, wearing a yellow shirt and blue pants, holding a red bag and standing in front of a building with 'BANK' on it. The text 'Where does she work?' and 'Where does he work?' is written in black. Below the illustrations is the logo for 'English.com' and the website address 'www.mes-english.com'.

BA
Where does she work?
ESL/EFL Resources for Teachers
English.com
www.mes-english.com

Where does he work?
BANK
ESL/EFL Resources for Teachers
English.com
www.mes-english.com

A purple background card with two circular illustrations. The left illustration shows a woman with blonde hair in a ponytail, wearing a yellow shirt and blue pants, holding a red bag and standing in front of a building with 'BA' on it. The right illustration shows a man with brown hair, wearing a yellow shirt and blue pants, holding a red bag and standing in front of a building with 'BANK' on it. The text 'Where does she work?' and 'Where does he work?' is written in black. Below the illustrations is the logo for 'English.com' and the website address 'www.mes-english.com'.

BA
Where does she work?
ESL/EFL Resources for Teachers
English.com
www.mes-english.com

Where does he work?
BANK
ESL/EFL Resources for Teachers
English.com
www.mes-english.com

A purple background card with two circular illustrations. The left illustration shows a woman with blonde hair in a ponytail, wearing a yellow shirt and blue pants, holding a red bag and standing in front of a building with 'BA' on it. The right illustration shows a man with brown hair, wearing a yellow shirt and blue pants, holding a red bag and standing in front of a building with 'BANK' on it. The text 'Where does she work?' and 'Where does he work?' is written in black. Below the illustrations is the logo for 'English.com' and the website address 'www.mes-english.com'.

BA
Where does she work?
ESL/EFL Resources for Teachers
English.com
www.mes-english.com

Where does he work?
BANK
ESL/EFL Resources for Teachers
English.com
www.mes-english.com

A purple background card with two circular illustrations. The left illustration shows a woman with blonde hair in a ponytail, wearing a yellow shirt and blue pants, holding a red bag and standing in front of a building with 'BA' on it. The right illustration shows a man with brown hair, wearing a yellow shirt and blue pants, holding a red bag and standing in front of a building with 'BANK' on it. The text 'Where does she work?' and 'Where does he work?' is written in black. Below the illustrations is the logo for 'English.com' and the website address 'www.mes-english.com'.



BA

Where does she work?

ESL/EFL Resources for Teachers

English.com

www.mes-english.com

Where does he work?

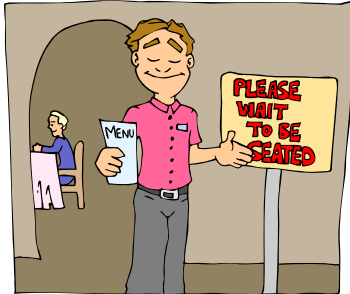
BANK

ESL/EFL Resources for Teachers

English.com

www.mes-english.com

This is a worksheet for ESL/EFL students. It features two cartoon illustrations. The first shows a woman in a yellow shirt and blue pants carrying a red bag, standing in front of a building labeled 'BA'. The second shows a man in a yellow shirt and blue pants running towards a building labeled 'BANK'. The text 'Where does she work?' and 'Where does he work?' is written in large, bold letters. At the bottom, there is a logo for 'English.com' and the website address 'www.mes-english.com'.



BA

Where does she work?

ESL/EFL Resources for Teachers

English.com

www.mes-english.com

Where does he work?

BANK

ESL/EFL Resources for Teachers

English.com

www.mes-english.com

This is a worksheet for ESL/EFL students. It features two cartoon illustrations. The first shows a woman in a yellow shirt and blue pants carrying a red bag, standing in front of a building labeled 'BA'. The second shows a man in a yellow shirt and blue pants running towards a building labeled 'BANK'. The text 'Where does she work?' and 'Where does he work?' is written in large, bold letters. At the bottom, there is a logo for 'English.com' and the website address 'www.mes-english.com'.

wild

BA

Where does she work?

ESL/EFL Resources for Teachers

English.com

www.mes-english.com

Where does he work?

BANK

ESL/EFL Resources for Teachers

English.com

www.mes-english.com

This is a worksheet for ESL/EFL students. It features two cartoon illustrations. The first shows a woman in a yellow shirt and blue pants carrying a red bag, standing in front of a building labeled 'BA'. The second shows a man in a yellow shirt and blue pants running towards a building labeled 'BANK'. The text 'Where does she work?' and 'Where does he work?' is written in large, bold letters. At the bottom, there is a logo for 'English.com' and the website address 'www.mes-english.com'.