

The cards should be cut and folded over onto itself to make the right hand side the backing



clothes

ESL/EFL Resources for Teachers
English.com
www.mes-english.com



clothes

ESL/EFL Resources for Teachers
English.com
www.mes-english.com



clothes

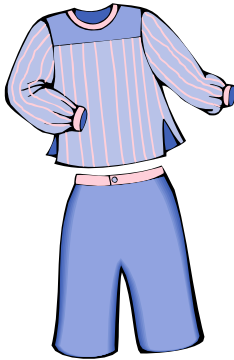
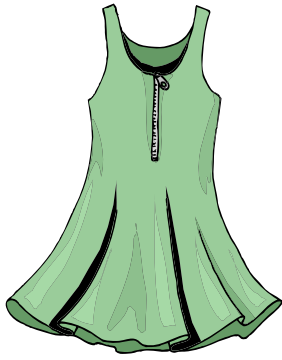
ESL/EFL Resources for Teachers
English.com
www.mes-english.com



clothes

ESL/EFL Resources for Teachers
English.com
www.mes-english.com







WILD

